



POUR'D + FRIIA

Syrup/Concentrate Dispense

Hot, Cold, Sparkling Water

COMPLETE
BEVERAGE
CHOICE



SAMPLE RECIPE USING POUR'D + FRIIA:



1 Add ice to a highball glass. Press **Button 1** on **POUR'D** to dispense 10ml of iced tea syrup.



2 Top with 180ml sparkling water from **Marco FRIIA**.



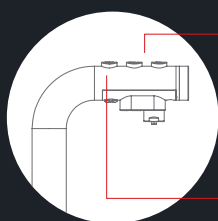
3 Press **Button 2** on **POUR'D** to add a 10ml shot of elderflower syrup (with no dilution.)



4 Top up with ice, mint and a slice of lemon.



POUR'D can dispense up to two syrups or concentrates from one font. **FRIIA** can then be used to top up any syrup or concentrate with hot, cold, or sparkling water.

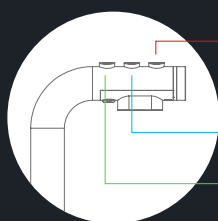


POUR'D

Buttons 1 + 2
Syrup/Concentrate 1*

(*can also be diluted with mains water for RTD beverage)

Button 3
Syrup/Concentrate 2
(cannot be diluted)

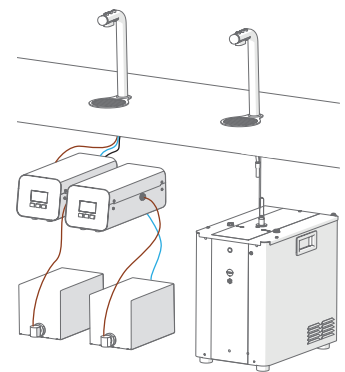


FRIIA

Hot

Cold

Sparkling



NOTE: When used with two control boxes, the POUR'D font can only dilute **ONE** syrup with water. The other syrup cannot be diluted with water.

www.marcobeveragesystems.com/pour'd